

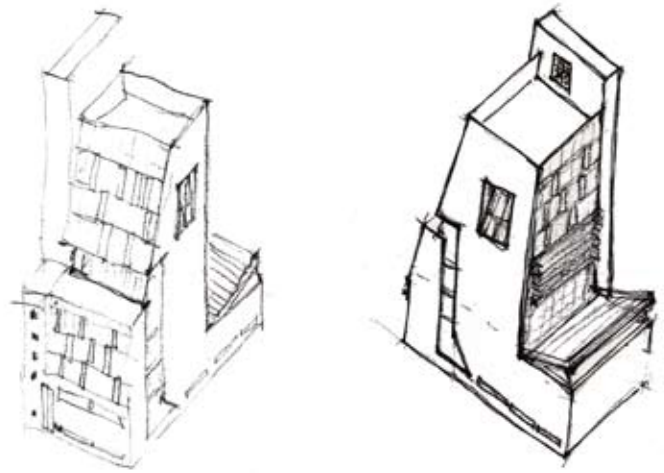
CAPLESJEFFERSON**ARCHITECTS**PC

Hybrid School - Stephen Gaynor & Ballet Hispanico



**HYBRID SCHOOL - STEVEN GAYNOR &
BALLET HISPANICO**
New York, NY

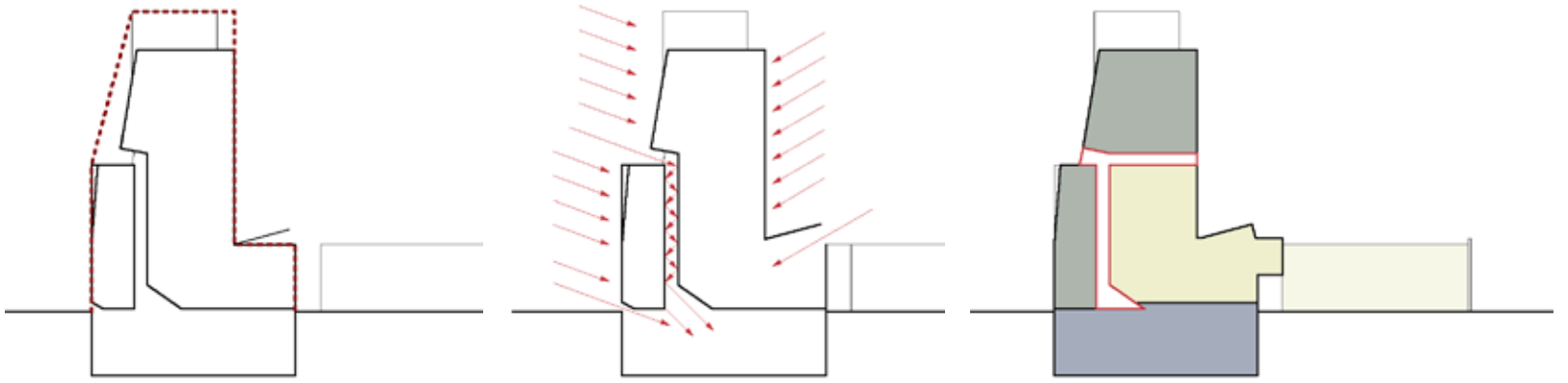
Thanks to the exigencies of New York real estate, two very different schools decided to build and share a single building—while maintaining their very separate missions and identities; a school for elementary age learning-disabled children and a ballet company. The design ideas are based on the following: memory and gestalt as the basis for each building type. School = Warm, garret, small and enveloping. Ballet = Cool, classic ballet room, large, tall, with mirrors and daylight.



Concept sketches



Urban inspirations



Building diagrams;
1

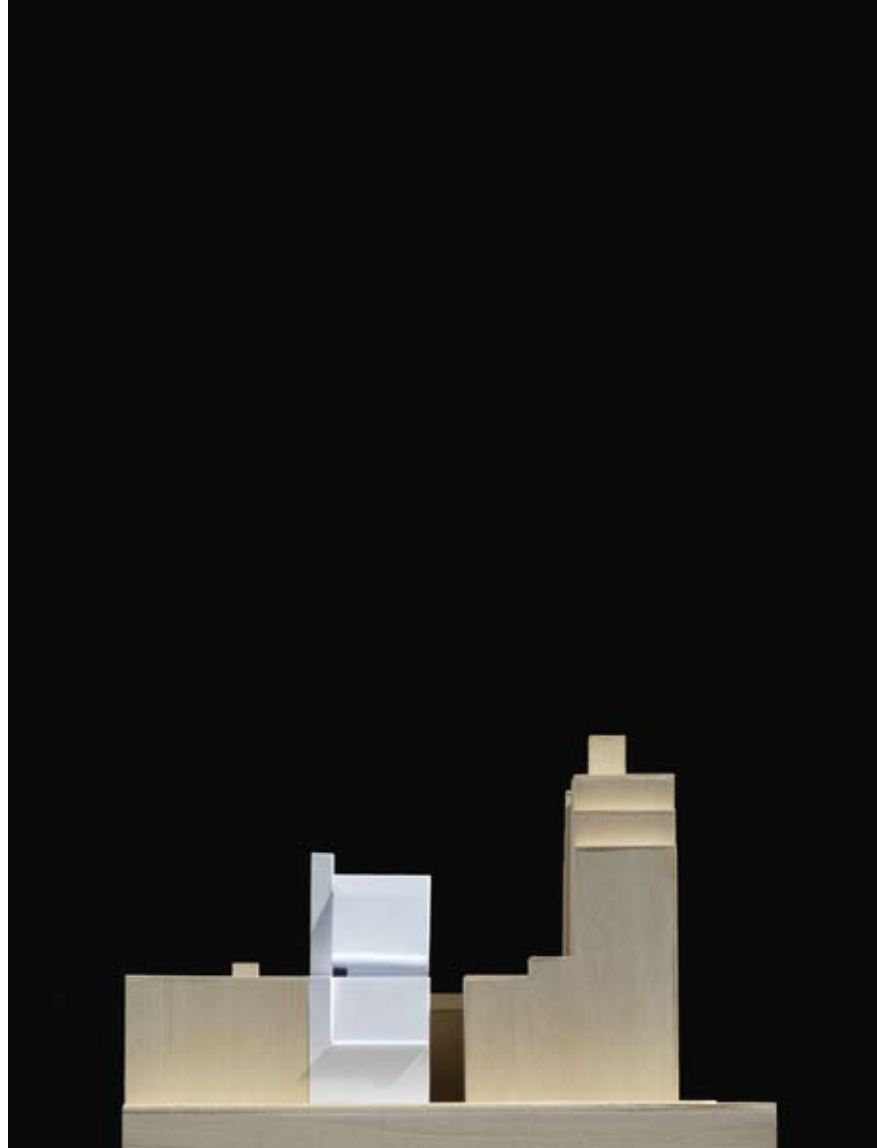
Below left: 90th Street facing north;
Below Circulation mode



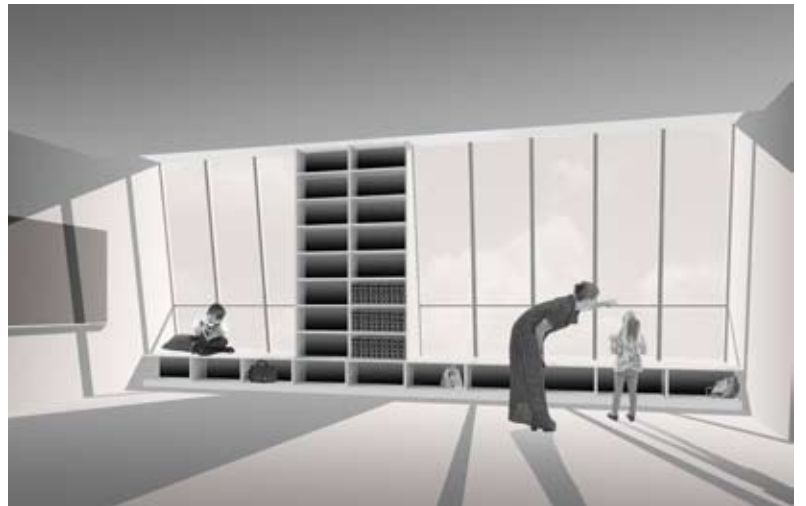
Below left: North elevation;
Below right: South elevation

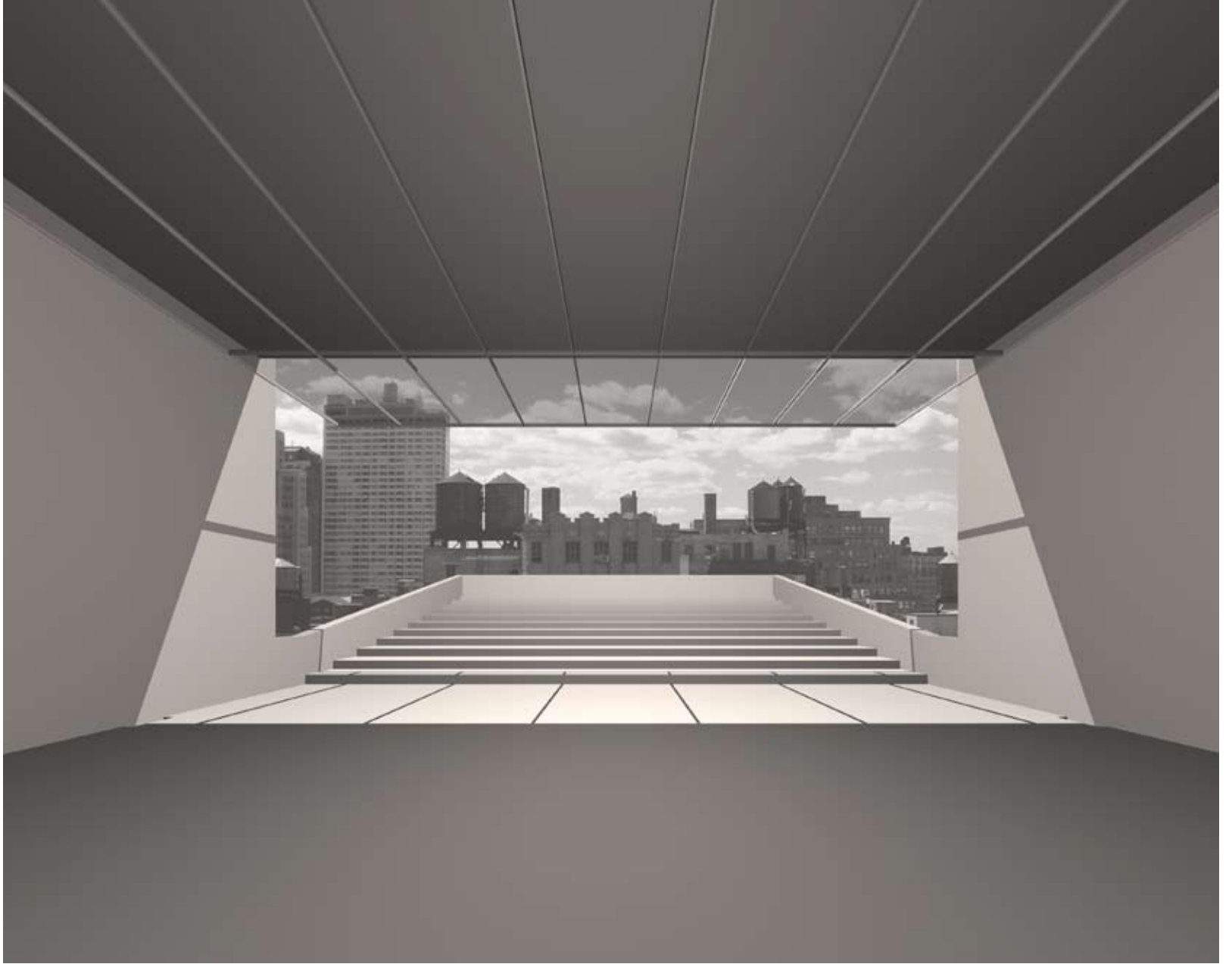


Top: Context model
Below left: West elevation;
Below right: East elevation



Below left: Light slot with school stair;
Top right: Classroom
Bottom right: Gymnasium





Above: Ballet practice opens to weather and viewers; Below: Light slot with school stair at lobby level





CAPLESJEFFERSON **ARCHITECTS** PC | 37-18 Northern Boulevard, Suite 319 | Long Island City, NY 11101 | www.capjeff.com